

# Peterborough Horticultural Society

Volume 165    **May 2026**    Number 5

**Wednesday May 27<sup>th</sup>, 2026 @ 7pm, at the Lion's Centre**  
**In Person: "Pond Gardening" by Joey Azzarello**



May's speaker is Joey Azzarello, the President of Clearwater Creations, a custom water feature company based in Ontario.

Joey specializes in designing and building natural ecosystem ponds, waterfalls, wetlands, and recreational swim ponds that blend seamlessly into the landscape. With years of hands-on experience in excavation, filtration systems, and biological balance, Joey focuses on creating water features that are both visually striking and environmentally responsible. His work emphasizes long-term sustainability, proper construction methods, and education so homeowners can confidently care for their ponds.

Joey's presentation will walk us through a practical, nature-based approach to building and maintaining backyard ponds. The foundational principles behind ecosystem ponds, including proper excavation, rock placement, circulation, filtration, and plant integration will be covered.

There will also be discussion on how beneficial bacteria, aquatic plants, and proper aeration work together to create balanced, low-maintenance water features. Attendees will gain a clear understanding of how to build a pond that supports fish, attracts wildlife, and stays clean naturally—without relying heavily on chemicals.



***Please note: This meeting will not be available on Zoom  
Guests are Welcome for \$5 per person***

## President's Message – May 2026

May is such a welcome month when our gardens truly begin to awaken! After a long winter and a cautious April, it's exciting to see bulbs blooming, perennials emerging, and trees leafing out in fresh spring colour. This is the season of anticipation and possibility.

As we move into our active gardening weeks, it's a perfect time to prepare beds, divide hardy perennials, sow cool-season vegetables, and start planning containers that will brighten our homes and community spaces. Remember to be patient with tender plants, our last frost date can still surprise us!



Our garden club activities are also in full swing. Our Flower Show is just around the corner, don't miss this opportunity to share your own propagated treasures. Thank you to everyone who participates in meetings, shares knowledge, and supports one another. Your enthusiasm and generosity make our club such a welcoming and inspiring place to learn and grow together.

May is also a wonderful time to invite a friend or neighbour to join us, gardening is always better when shared!

I also want to extend a warm welcome to our new members. We're so glad you've joined us, and we look forward to learning from and growing with you in the months ahead. Please don't hesitate to reach out, get involved, and make the most of what our society offers.

Wishing you warm days, gentle rains, and the simple joy of watching your garden come to life.

Happy gardening,

❖ **Anne Trudel-Inglis**  
**PHS President**

---

## Membership Reminder

### Welcome back to our in-person meetings!

If you are attending an in-person meeting and want to renew, please insert your membership fee (cash or cheque) in an envelope with your full name printed on it and give it to Laura at the front door desk. Name tags will be printed and ready for you to pick up at the next meeting.

### The best way to renew?

**For renewals (if your contact information has not changed):**

- Please send an e-transfer in the amount of \$25 (individual) or \$30 (family) to [ptbohortsoc@gmail.com](mailto:ptbohortsoc@gmail.com) or
- Send a cheque made out to PHS for \$25 single or \$30 family to:  
 Mary-Rose Daigle  
 512 Dickson Street  
 Peterborough, ON K9H 3K1

**If your contact information has changed OR you are joining as a new Member:**

- complete this online form: <https://forms.gle/FfxF1XIzrCCdfkfk7>
- payment options: e-transfer or cheque (see bullet points above)

**What do you get for your membership?**

- Nine of our amazing newsletters
- Nine general meetings, first two winter meetings on Zoom, all with great speakers.
- Prize table
- A PHS bus trip – location this year is Prince Edward County ([click here for details](#))
- Discounts of 10% to 15% from local horticultural vendors

**For membership renewals & information, check out our Membership page:  
<https://peterboroughhort.com>**

## Winter Flower Show

Thank you to all who submitted photos, "Winners" are:

**2026 Winter Flower Show – The House Special**

**Winner: Photo #2 Amaryllis**

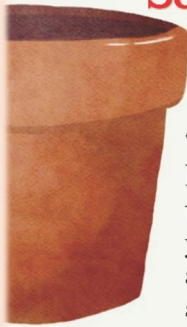
**Submitted by: Steve Riddell**

“What I’m proud of is that the red one is from last year and the pink and white one is resurrected from two years ago. I really didn’t know what I was doing but planted both these bulbs in my garden for the growing season, let the leaves do their work, then cut back the foliage in the fall and let the bulbs rest in a cool corner of my crawlspace for a couple of months. I pulled out both bulbs and repotted them in late November and really didn’t have high hopes that they would bloom again – well was I wrong!”



## 2026 Winter Flower Show– The Non-Conformist

**Winner: Photo #1 Citronella**  
**Submitted by: Mary-Kathleen Dunn**



“This is a citronella plant (*Pelargonium citrosum*) I’ve had for two years. It started out as an outdoor plant, and this is the second year I’ve over wintered it inside. As you can see, I have a grow light on it, which has kept it alive – but it’s grown so much (and I haven’t pruned it at all) that the lower leaves get no light and so aren’t doing so well. It’s right next to my desk – and though it’s a bit scraggly I love the scent of it!”



Mary-Kathleen

---

## May Flower Show

This spring’s Flower Show and Tell event will take place at our May meeting, Wednesday, May 27, 2026.

*There will be prizes! Our excellent raffle gift finder Maura will be picking up a prize for the winner of each category.*

We will follow the same format as last year: there is no formal judging - any Peterborough Horticultural Society member may enter and everyone attending may vote for their choice. There will be four categories (three specimen classes and one design class). You will be able to vote on your favourite in each category and the exhibit with the most votes in each category will be deemed the ‘Winner’.

Even if you have never entered a flower show before, this is the time to take a chance and have some fun. It’s fun and easy, we are not concerned with types and sizes of containers, or length and size of blossoms. Winners are picked by the membership, chosen for what appeals to them on a spontaneous and personal basis.

### Rules:

1. Exhibitors are members of the Peterborough Horticultural Society.
2. Only one entry per person per class.
3. Exhibits must be in place by specified time (6:45 pm).
4. In the specimen classes, plant materials must be grown by the exhibitor. Plant material is restricted to the named specimen(s), no other additions to be added.
5. Entries in the design class must be designed by the exhibitor; flowers, vegetables, foliage and other materials must be garden grown (from exhibitor’s garden or foraged) but not commercially grown.
6. A label with the exhibitor’s name and class must be submitted with each entry.

## Specimen Class:

1. **Section 1** - Perennials - Any perennial(s), named, single or multiple (maximum 5) stems of the same or different species.
2. **Section 2** - Spring flowering bulbs – Any spring flowering bulbs (corms,) named, single or multiple (maximum 5) stems of the same or different species.
3. **Section 3** - Flowering branches - spring flowering branch(es), named, - 3 branches of the same or different plant.

## Design Class:

'Au Naturel' – Free form design, using fresh spring blossoms and materials from nature. The design should be suitable for a coffee or kitchen table – not exceeding 30" high and 30" across.

❖ **Marjorie Vendrig**

---

## BUG Club Corner

*For 2026 (and possibly longer?) we will be posting articles on common bugs, both beneficial and non-beneficial species. We welcome responses to articles, ideas and/or suggestions.*

### **Spongy Moth (*Lymantria dispar*) (formerly known as the European Gypsy Moth)**

The spongy moth is native to Europe, Asia, and north Africa. Introduced to North America 130 years ago, and has since been detected in northeastern U.S.A. and in portions of Ontario, Quebec, New Brunswick, Prince Edward Island, and Nova Scotia.



Adult, male and female

**Identification:** Adults - Males are brown in colour and have feathery antennae. Females are 1 1/2 inches long and are white with a black "v" shaped marking on their forewings. Female moths cannot fly and will fall to the ground if picked up. The adults cannot feed due to the lack of a mouthpart, leaving them only about two weeks to mate and produce eggs before they die.

Photo: <https://inspection.canada.ca/en/plant-health/invasive-pests-and-plants/insects/spongy-moth>

Eggs are a tanned-yellow in colour, covered with a fuzz and found as a "mass of eggs" in the protected areas of trees and outdoor items such as, vehicles, garbage cans, furniture and children's toys. Each female lays only one egg mass and each egg mass can hold up to 500-1000 eggs



Photo: Milan Zubrik, Forest Research Institute - Slovakia, Bugwood.org



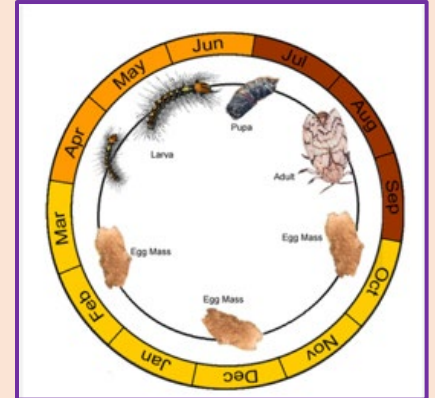
### **The larva (caterpillar): A feeding machine**

Larvae are up to 6 cm in length, covered with hairs. The caterpillar has five pairs of blue dots and six pairs of red dots down its back.

*Photo Credit: Bill McNee, Wisconsin Department of Natural Resources*

**Lifecycle:** The spongy moth female lays between 500 to 1,000 eggs in tree bark crevices. The eggs hatch in spring (April), and the emerging larvae from the eggs climb up the trees to feed on leaves. The majority of the feeding occurs during the night. The larval stage lasts for approximately 40 days. At the end of this stage, the larvae seek safe shelter to pupate. In early summer (June-July), the larvae enter a transitional stage for 10 to 14 days in which the larvae transform into adults. Adults have less than two weeks to mate and reproduce before they die.

*Photo: <https://www.canr.msu.edu/news/spongy-moth-basics>*



**How it spreads:** The long-distance spread has been largely attributed to the movement of firewood, as well as outdoor recreational and household articles.

### **Signs of infestation:**

- Larvae chew holes in leaves or devour entire leaves.
- In late July, spongy moth egg masses can be observed on the trunks and branches of infected trees.
- During severe outbreaks, trees and shrubs are completely defoliated over large areas; despite the trees' ability to produce a new crop of leaves over the summer, the damage causes substantial growth loss.

**Host Tree** - The spongy moth has over 300 known host plant species, and about 150 of them are considered favoured hosts. A caterpillar feeds primarily on hardwood trees, and may feed on softwood trees. Some favoured host tree species include:

- Oak (*Quercus* spp.)
- Maple (*Acer* spp.)
- Birch (*Betula*)
- Alder (*Alnus* spp.)
- Hawthorne (*Crataegus* spp.)

**Control Method** - Small scale spongy moth populations can be managed mechanically through:

- Scraping and destroying egg masses.
- Applying burlap and sticky barrier bands to trunks of potential host trees.
- Both techniques are used to keep the spongy moth population suppressed and at a manageable level.

Sources:

<https://www.invasivespeciescentre.ca/invasive-species/meet-the-species/invasive-insects/spongy-moth/#general-information>

<https://fyi.extension.wisc.edu/spongymothinwisconsin/life-cycle-and-biology-3/life-cycle/>

# Spring is BUS TRIP time!

**Tuesday June 9, 8am-5:30pm – SOLD OUT!**

Depart from Living Hope Church parking lot, Lansdowne St E. near Morello's. First stop is the Quinte ONroute South (restroom).

Next, we stop at these places:

- Christopher Mousseau's garden (4 acres, recommended by Charlie Dobbin)
- Carson's Country Market, Bloomfield
- Oeno Sculpture Garden + Box Lunches from PEC Women's Institute
- Lockyer's Garden Centre, Picton
- Photo Op from the bus at Base31 restored army base
- Dropseed: native plant nursery, Milford

We'll finish up our whirlwind tour of PEC at the Quinte ONroute North before returning to Living Hope Church parking lot, Lansdowne St E.

The total cost of the trip including lunch is \$100 with the catered lunch, or \$85 if you bring your own lunch.

This trip is a fundraiser for the 7 high school scholarships that we are offering to our local high schools of \$150 each school. Thank you for your help!

---

## PHS Shirts for Members

Say hello to your new favourite gardening shirt!

Ladies crewneck t-shirt



Unisex crew neck t-shirt



Designed by the Board, to be screen printed right here in Peterborough.

Funds raised from sales will help us to broaden our scholarship donations for 2027 and we hope that visibility out and about in the community will spark conversations and interest and help attract new members.

Pre-sales will take place at this month's meeting. Shirts are \$25 each. In order to go ahead with the order, we need to confirm 24 sales. Please consider bringing extra cash with you this month to place your order. We will have blanks at the meeting to help determine the size and style you're interested in!

## Plant Sales! Plant Sales! Plant Sales!



**Lindsay Garden Club**  
**Plant Sale**  
 Saturday, May 23 @ 9:00 am to 12:00 pm  
**Memorial Park**  
 Lindsay St S. Lindsay ON  
 Garden Club Memberships available for purchase  
**Everyone Welcome!**  
 All plants \$5. Cash Only.  
 For more information, visit our website:  
[www.lindsaygardenclub.com](http://www.lindsaygardenclub.com)



**Lakefield Horticultural Society**  
**ANNUAL PLANT SALE**  
 Saturday May 16th, 2026  
 8am to noon or sell-out  
 At the Cenotaph Park  
 Annuals, Perennials,  
 Native Plants & Shrubs  
 All funds raised support the beautification of Lakefield



**FENELON FALLS HORTICULTURAL SOCIETY**  
**Annual Plant Sale**  
 SATURDAY MAY 23RD  
 8 AM TO 2 PM  
 THE MARYBORO LODGE MUSEUM  
 50 OAK STREET, FENELON FALLS  
 FOR MORE INFORMATION:  
[WWW.BACKYARDBUZZ.CA](http://WWW.BACKYARDBUZZ.CA)  
[HORTICULTURAL@HOTMAIL.COM](mailto:HORTICULTURAL@HOTMAIL.COM)  
 LOCAL PLANTS, GARDEN THEMED ART, CRAFTS, MUSIC & MORE!  
**CASH ONLY**



**Minden & District Horticultural Society**  
**Plant Sale**  
 Saturday May 16, 2026  
 10am-1pm  
 63 Bobcaygeon Rd.  
 Rain or Shine



Plan to attend this annual, gigantic  
**Plant Sale**  
 Presented by Omemece Blooms Garden Club  
 Rain or Shine!!!  
**Saturday May 16th, 2026**  
 (The Long Weekend!!!) Time: 9 AM to 11 AM  
**Omemece Legion**  
 (located on the main street of Omemece)  
 For more information: [omemeceblooms.ca](http://omemeceblooms.ca)  
 Annuals, perennials, houseplants, vegetables  
 Call Chris for further information: 705 799- 0237



**Norwood & District Horticultural Society**  
 EST. 1992  
**ANNUAL PLANT SALE**  
 Vegetables and Herbs  
 Native Plants  
 Annuals and Perennials  
 Books  
 Gently Used Garden Tools  
 Saturday, May 9, 2026  
 Location: next to Norwood Business Bungalow, south of the traffic lights, Norwood  
 Sale starts at 8:30 am  
 Rain or Shine  
 Proceeds from the Plant Sale support the educational program of the Norwood and District Horticultural Society.  
 NEW MEMBERS ALWAYS WELCOME  
 Call/Text 705-750-8472 for more information

## PHS Speakers for 2026

### In Person meetings at the Peterborough Lion's Centre

May 27: **Joey Azzarello** - "Pond Gardens"

June 24: **"Ask Me Anything"** – Perennials, Pests and Pollinators: Panel of Experts

*Summer Break so no-one has to come in from the garden!*

Sept. 23: **Dave Ellis** – "Wildlife Photography"

Oct. 28: **Jessica York (Branch Ranch)** – Demonstration of Seasonal Decor

Nov. 25: **MJ Pilgrim** - "Christmas Trivia"  
**PHS AGM will take place after MJ's talk**



**Garden Ontario**  
**50/50 Raffle**

Heat Up Your Summer with a Big Win!

- Bring the Heat, Bring the Fun
- It's a Summer Win Waiting to Happen

**Draw: July 26, 2026**

Get Your Tickets Today!!

50% Goes To the Winner!

**Ticket Prices:**

700 for \$75
200 for \$50
40 for \$20
10 for \$10

Proceeds support Garden Grants and Education in Ontario

<https://www.rafflebox.ca/raffle/ontario-ha> Licence # RAF1533331



## Gardening Resources

**OHA Garden Ontario** website <https://gardenontario.org> lots of downloadable resources and the Autumn 2025 Trillium

**Peterborough Master Gardeners** website is <https://peterboroughmastergardeners.com/> read the blog, ask questions, find events in Peterborough area.

**Xeriscaping Handout** from Pam Clarke is attached at the end of this newsletter for reference.

There are a lot of websites, books and groups that provide resources – if you have a favourite one, please let us know and we will share in the newsletter

## Upcoming Events and Activities

**April – May** – University of Guelph Arboretum Spring Workshops:  
[www.arboretum.uoguelph.ca/educationandevents/workshops](http://www.arboretum.uoguelph.ca/educationandevents/workshops)

**June 9<sup>th</sup>** – PHS Bus Trip – location this year is Prince Edward County  
([click here for details](#))

**June 19<sup>th</sup> & 20<sup>th</sup>** – "Discovering Ontario" Triennial Flower Show 2026; Landscape Ontario, 7856 Fifth Line South, Milton ON (\$10 fee, cash at the door)



---

---

**DROUGHT TOLERANT PLANTS - ZONE 5 (ANNUALS EXCEPTED)**

---

---

---

**PERENNIALS**

---

Baby's Breath	<i>Gypsophila</i>
Black-eyed Susan	<i>Rudbeckia spp.</i>
Blazing Star	<i>Liatris spp.</i>
Butterfly Weed	<i>Asclepias tuberosa</i>
Daylillies	<i>Hemerocallis</i>
Evening Primrose	<i>Oenothera</i>
False Indigo	<i>Baptisia australis</i>
False Sunflower	<i>Heliopsis helianthoides &amp; cvs.</i>
Globe Thistle	<i>Echinops</i>
Hens and Chicks	<i>Sempervivum</i>
Lamb's Ears	<i>Stachys byzantina</i>
Mealycup Sage	<i>Salvia farinacea</i>
Mullein	<i>Verbascum spp.</i>
Poppy	<i>Papaver spp. &amp; cvs.</i>
Purple Coneflower	<i>Echinacea purpurea &amp; cvs.</i>
Rose Champion	<i>Lychnis coronaria</i>
Russian Sage	<i>Perovskia cvs.</i>
Sea Lavender	<i>Limonium latifolium</i>
Silver King	<i>Artemisia ludoviciana</i>
Silver Mound	<i>Artemisia schmidtiana</i>
Spurge	<i>Euphorbia spp. &amp; cvs.</i>
Stonecrop	<i>Sedum spp. &amp; Cvs.</i>
Thrift	<i>Armeria spp. &amp; cvs.</i>
Yarrow	<i>Achillea millefolium</i>

---

**GRASSES**

---

Blue Fescue	<i>Festuca glauca</i>
Blue Oat Grass	<i>Helictotrichon sempervirens</i>
Bluestem	<i>Andropogon spp.</i>
Feather Reed Grass	<i>Calamagrostis x acutiflora</i>
Fountain Grass	<i>Pennisetum alopecuroides</i>
Little Bluestem	<i>Schizachyrium scoparium</i>
Maiden grass**	<i>Schizachyrium scoparium</i>
Purple Moor Grass	<i>Molinia caerulea</i>
Quaking Grass	<i>Briza maxima</i>
Ravenna Grass	<i>Erianthus ravennae</i>
Sedge	<i>Carex spp. &amp; cultivars</i>
Tufted Hair Grass	<i>Deschampsia cespitosa</i>

## TREES, SHRUBS AND VINES

---

American Chestnut	<i>Castanea dentata</i>
Beauty Bush	<i>Kolkwitzia amabilis</i>
Bluebeard	<i>Caryopteris spp. &amp; cvs.</i>
Butterfly Bush	<i>Buddleia daviddi &amp; cvs.</i>
Colorado Blue Spruce	<i>Picea pungens</i>
Common Hop Tree	<i>Ptelea trifoliata L.</i>
Cotoneaster	<i>Cotoneaster species</i>
Hick's Yew	<i>Taxus cuspidata</i>
Junipers	<i>Juniperus</i>
Larch	<i>Larix decidua</i>
Lilac	<i>Syringa vulgaris</i>
Mock Orange	<i>Philadelphus spp.</i>
Mugo Pine	<i>Pinus mugo</i>
Ninebark	<i>Physocarpus opulifolius &amp; cvs.</i>
Oaks	<i>Quercus</i>
Peashrub**	<i>Caragana</i>
Pine	<i>Pinus</i>
Potentilla	Abbotswood' & cultivars
Rose of Sharon	<i>Hibiscus syriacus</i>
Smoke Bush	<i>Cotinus coggyria &amp; cvs.</i>
Sumac**	<i>Rhus spp.</i>
Wisteria**	<i>Wisteria</i>
Adam's Needle	<i>Yucca filamentosa</i>

## GROUNDCOVERS

---

Catmint	<i>Nepeta species</i>
Fescue grass	<i>Festuca species</i>
Hens & Chicks	<i>Sempervivum species</i>
Lady's Mantle	<i>Alchemilla mollis</i>
Mugwort, Sagebrush	<i>Artemisia species</i>
Perennial Candytuft	<i>Iberis sempervirens</i>
Pussytoes	<i>Antennaria species</i>
Rye grass	<i>Lolium species</i>
Snow in Summer**	<i>Cerastium tomentosum</i>
Speedwell**	<i>Veronica species</i>
Spotted Deadnettle**	<i>Lamium maculatum</i>
Sweet Woodruff**	<i>Galium odoratum</i>
Thyme	<i>Thymus</i>

## ANNUALS

---

Alyssum	<i>Lobularia maritima</i>
Bachelor's Buttons	<i>Centaurea cyanus</i>
Blanketflower	<i>Gaillardia aristata</i>
California Poppy	<i>Eschscholzia californica</i>
Cosmos	<i>Cosmos sp.</i>
Dusty Miller	<i>Senecio cineraria</i>
Cranesbill	<i>Geranium x hortorum</i>
False Sunflower	<i>Helianthes helianthoides</i>
Lavender	<i>Lavendula</i>
Nasturtiums	<i>Tropaeolum majus</i>
Marigolds	<i>Tagetes</i>
Portulaca	<i>Portulacaceae</i>
Pot Marigold	<i>Calendula officinalis</i>
Scarlet Sage	<i>Salvia splendens</i>
Spider Flower	<i>Cleome hassleriana</i>
Sun plant	<i>Portulaca</i>
Zinnia	<i>Zinnia angustifolia</i>

## BULBS

Tulip	<i>Tulipa</i>
Allium	<i>Allium sp.</i>
	<i>Colchicum</i>

Note- most spring flowering bulbs are drought tolerant as they are in essence a storage organ, with its own reserve of nourishment and moisture to protect it from the harsh elements

Prepared by Durham Master  
Gardeners 2015

\*\*invasive or spreading